

## ANNUAL MPPDC LEGISLATIVE DINNER FOCUSES ON LOCAL PRIORITIES AND VIRGINIA'S BUDGET WOES

Lowery's Restaurant in Tappahannock hosted the annual MPPDC Legislative Dinner Meeting on Wednesday, December 19, 2001. Chairman Kenneth Williams introduced the Commission's 2002 Legislative Program and Dan Kavanagh, Executive Director of the MPPDC, reviewed the three priority issues as determined by the Commission. The Legislative Program includes the following recommendations:

### **Income Tax Revenue Sharing**

The Commonwealth should allocate 10% of Income Tax Revenue to the localities based on population. While our communities continue to grow, the local tax base that provides revenue to support them is not keeping up with expenses. This problem will affect our ability to compete on a regional and global level. Without quality community development, including improving schools, water and sewer systems, safe neighborhoods and a higher quality of life, we will not be able to attract new economic activity to our area.

### **State Assistance for Schools and Courthouse Construction**

The General Assembly should consider the following proposals:

- Direct state grants for school and courthouse construction
- Additional bonding authority for the Virginia Resources Authority for school and courthouse construction
- Increase in the local option sales tax
- Allocation of lottery proceeds for

*(Continued on page 4)*

### **Legislators Address the Issues**

#### **Delegate Harvey Morgan, 98<sup>th</sup> District:**

Delegate Morgan responded to the 2002 MPPDC Legislative Program recommendations with concern for the income tax revenue sharing idea, but with support for the allocation of more tax revenue to localities as population increases and for the provision of additional money for school construction.

Delegate Morgan offered his position on other issues concerning the Middle Peninsula that were not included in the legislative package. He feels that the amendment giving judges the authority to authorize a locality to build a courthouse should be reviewed again and a committee should be appointed to review requests for courthouse construction. Additionally, he believes that public access sites made available by the MPPDC staff should be closely reviewed by VDOT and that there should be greater availability of high-speed and electronic telecommunications.

#### **Senator Nick Rerras, 6<sup>th</sup> District:**

State Senator Rerras' district was expanded to include Mathews County. He also serves Eastern Shore and parts of Norfolk and Virginia Beach. Rerras focused his remarks on the state budget, which he feels will need to be cut by about \$1 billion from the current budget. Rerras remarked on other issues in-

*(Continued on page 5)*

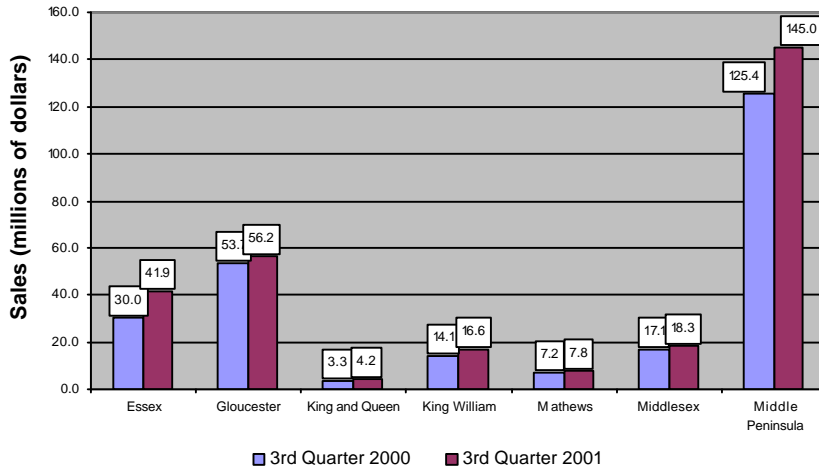
### **In this issue...**

• Economic Indicators.....	2
• Project Updates.....	3
• MPBDP Developments.....	6
• Events Calendars.....	7
• MPPDC News.....	8



# MPPDC DEMOGRAPHICS

## Taxable Sales



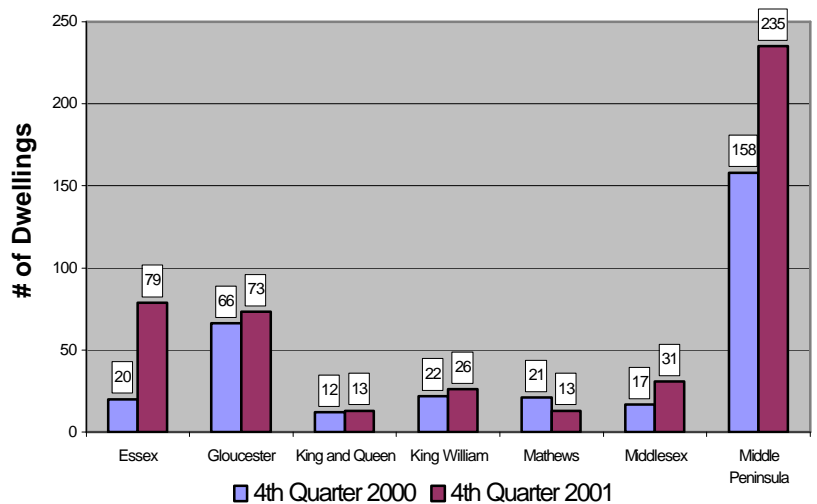
A comparison of taxable sales in the third quarters of 2000 and 2001 shows a 13.5%, or \$19,600,000, increase for the Middle Peninsula region. Taxable sales increased by an average of 13.8% in all Middle Peninsula counties during this time period.

Source: Weldon Cooper Center

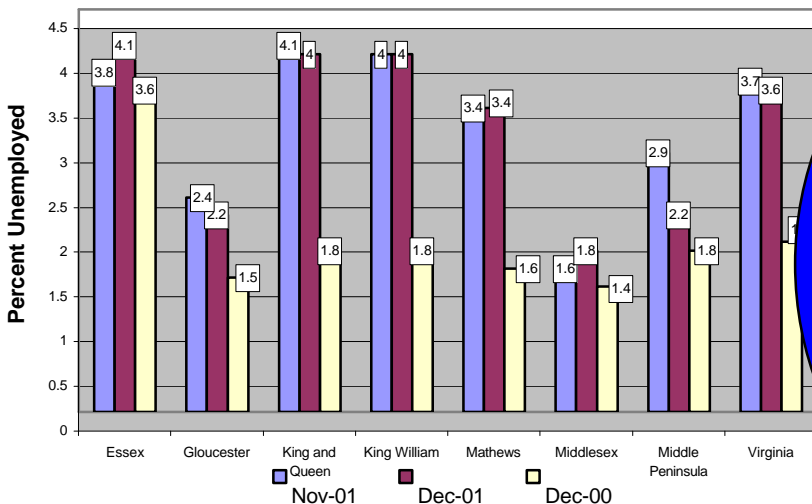
During the fourth quarter of 2001, a total of 235 residential building permits were issued for the Middle Peninsula. This represents a 33% increase over the fourth quarter of 2000. This significant change is due largely to the 75% increase in building permits issued by Essex County, most of which were used for multi-family dwellings. Mathews was the only county that issued fewer permits than the same quarter last year, down 61.5%.

Source: County Building Officials

## Residential Building Permits



## Unemployment Rates



The unemployment rate rose on the Middle Peninsula in the latter part of 2001, as it did throughout the country. Overall, the December 2001 rate (2.2%) was lower than Virginia's (3.6%). Essex (4.1%), King and Queen (4.0%), and King William (4.0%) had rates higher than the state average for the same period, but all regions reported a marked increase in unemployment levels over last year.

Source: Virginia Employment Commission

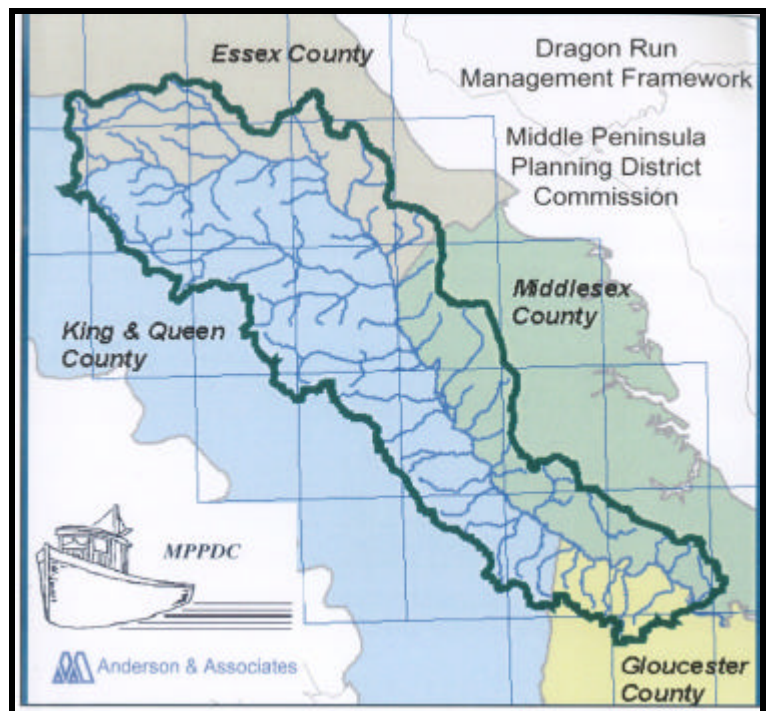
# PROJECT UPDATES

## Dragon Run Management Framework CD-ROM Now Available

The Middle Peninsula Planning District Commission has recently acquired, through a contract with Anderson and Associates, the *Dragon Run Management Framework* - a CD-ROM and accompanying report that houses the available Geographic Information System (GIS) data for the Dragon Run Watershed. This tool will be employed during the development of the Dragon Run Special Area Management Plan - a collaborative planning process to protect the Dragon Run's natural resources by producing enforceable policies involving all levels of government.

The *Dragon Run Management Framework* consists of 18 data sets that were either created by Anderson and Associates or acquired from local, state, and federal agencies. The product also includes a buildout analysis that generates a theoretical model of possible lots allowable under existing zoning and subdivision ordinances. The data sets included are:

- County boundaries
- Hydrology
- Conservation easements
- Natural Heritage species sites
- Colonial water birds
- Threatened and Endangered species
- Orthophoto quarter-quad imagery (DOQQ's)
- Topographic quads (DRG's)
- Floodplains
- Hunt clubs
- Land cover
- Future land use
- Parcels
- Roads
- Soils
- Structures
- Wetlands
- Zoning



For more information, please contact David Fuss at (804) 758-2311 or e-mail [mppdc@inna.net](mailto:mppdc@inna.net).

### MPPDC Electronic Resources

[www.MPPDC.com](http://www.MPPDC.com) - Middle Peninsula PDC Web Site

[MPPDC@inna.net](mailto:MPPDC@inna.net) - Middle Peninsula PDC E-mail

[www.MPDSB.org](http://www.MPDSB.org) - Middle Peninsula Disability Services Board Web Site

[www.mppdcgis.com](http://www.mppdcgis.com) - Middle Peninsula Coastal Data Resource Server

[MPBDP@inna.net](mailto:MPBDP@inna.net) - Middle Peninsula BDP E-mail

An advertisement for Middle Peninsula RideShare. The top part has a green background with white silhouettes of four people. Below that, the text reads 'IT PAYS TO RIDE WITH A FRIEND' in yellow. Underneath is 'Commuter Matching' in white, followed by '758-4VIP' in large yellow font and '4847' in smaller white font. At the bottom, it says 'Middle Peninsula RideShare' in yellow and 'A Service of the Middle Peninsula Planning District Commission' in white. There is a small boat icon on the left.

school construction

While our local governments pay for more than 60% of our education costs from a declining tax base, Virginia remains well below the national average in the amount of state aid localities receive per pupil. The state should factor public school capital improvement costs into the Standards of Quality and should help pay for these costs. In addition, the state should credit local funds expended for capital outlay and debt service toward each county's local expenditure effort.

### **State Assistance for CSB, CSA, Health and Social Services Funding**

The General Assembly should consider assuming the responsibility to fully fund the operation of the Community Services Board, the Comprehensive Services Act, and the Departments of Social Services and Health. Local governments are suffering a decrease in both state and federal funds, and have difficulty allocating their limited resources to all departments and programs. Currently, only 27% of local government revenues come from state aid and 3% comes from the federal government. State funding for a limited number of programs and departments would relieve the burden on localities.

### **Other Issues**

In addition to the priority issues of the 2002 Legislative Program, the MPPDC has concerns regarding the following:

- The need for continued support of technical education and workforce development through the Regional Competitiveness Program.
- Conflicts between state policies and local implementation of land use taxation and open space and conservation programs.
- Forest and farmland fragmentation problems related to growth management, or the lack thereof.
- The lack of incentives for high speed telecommunications infrastructure deployment in certain rural areas.

## **Chesapeake Bay Local Assistance Board Revises Regulations**

This past December the Chesapeake Bay Local Assistance Board (CBLAB) adopted amendments to the Chesapeake Bay Preservation Area Designation and Management Regulations. This was the culmination of a process to amend the regulations that commenced in 1996. The new regulations took effect March 1, 2002.

While many of the changes were cosmetic, closing perceived loopholes, or the codification of existing Chesapeake Bay Local Assistance Department (CBLAD) policies; others were extensive. Localities presently undergo Phase I (designation of Chesapeake Bay Preservation Areas and adoption of Bay Preservation provisions to the Zoning Ordinance) and Phase II reviews (incorporation of water quality protection measures into Comprehensive Plans). A Phase III program has been incorporated into the changes. The Phase III program requires a locality to assess its plan of development review regulations and processes (i.e. zoning, subdivision, erosion and sediment control, stormwater management, site plan review, etc.) to ensure these requirements are consistent with the CBLAB regulations. The changes include a compliance review by CBLAD to determine if a program is properly implementing and enforcing its local Chesapeake Bay Preservation Program.

In addition to the required changes there are some that are optional for a locality. These include allowing changes to the septic pumpout and reserve drainfield requirements, incorporation of best management practices serving more than one site, allowing civil penalties to enforce compliance, as well as allowing an additional grandfather period between October 1989 and the effective date of local program adoption.

Information has already been provided to localities concerning changes that must be addressed. Changes which close loopholes with respect to the 100 foot buffer took effect immediately upon March 1, 2002. Localities will have one year to adopt many of the other changes (i.e. definition changes, some language changes, site plan requirements). No local action is required on the Phase III consistency until further guidance has been issued by CBLAD.

In addition to the Phase III guidelines being developed by CBLAD, the agency is developing compliance review guidelines for evaluating implementation review and enforcement. CBLAD currently estimates it will begin the conducting compliance reviews the third quarter of 2002 begin taking and the reviews to the Board by



**A recently completed house on Indian Road in Gloucester. This house and others like it are candidates for a Bayscaping program funded through the Department of Forestry.**

*(Continued from page 1)*

cluding updating state police communication systems, strengthening bioterrorism laws, and salary increases for schoolteachers, college professors, and sheriff's departments. To help the state economy, Rerras advocates using money from the "rainy day" fund and favors additional road and bridge tolls and an increase in gas tax. He does not support an increase in sales tax.

### **Senator William "Bill" Bolling, 4<sup>th</sup> District:**

Senator Bolling also focused on the state budget crisis during his remarks. He wants to adopt a budget that avoids tax increases and directs available funds to education and public safety. Additionally, he would like to see a state park on the Middle Peninsula, the closing of old landfills, and the upgrading of sewage treatment plants.

Senator Bolling believes that no new government programs will be approved in the near term, but believes in keeping the car tax cut on schedule. He hopes that the legislature can adopt a new budget, approve bond referendums for capital projects in the area of higher education and conservation, and address natural resources. He will also sponsor measures to prevent and respond to terrorist attacks. Senator Bolling feels that limited increases in spending should be spent on existing programs and that the legislature should consider use of the "rainy day" fund and general obligation bonds.

## **Indian Road Project Update**

The Indian Road Project has completed 4 houses of the 21 projected to be repaired in the area. Gloucester County developed this project to improve the living conditions of the residents in the area through home repair, well and septic repair or installation, and building community pride. The Gloucester Housing Partnership also completed the second house involved in the training component of the project.

To enhance the housing rehabilitation program, MPPDC staff have received an Urban and Community Forestry Grant. The Community Design Bayscape Demonstration Program Grant is funded through the Department of Forestry and is an excellent opportunity to use environmental enhancement to develop residents' sense of connection between property ownership and property maintenance. Bayscaping advocates specific landscape management decisions that translate into improved water quality in neighborhood waterways, healthier forestry, enhanced habitat for many species of wildlife, and a gentler human impact upon the natural world.

The MPPDC and the York Watershed council will hold two workshops hosted by the Zion Hill Baptist Church in the Indian Road area. The first workshop, to be held on March 23<sup>rd</sup>, will involve actual demonstrations of plantings using the principles and techniques of Bayscaping.

The second workshop will be held April 6<sup>th</sup> and will assist the community with developing a Bayscape Greenway Development Plan. The Bayscaping plan will use beneficial plants that require minimal maintenance such as trimming, watering, and fertilizing. The plan will also improve the habitat for wildlife, and will conserve water used to maintain lawn and gardens.

The expected outcome of the Bayscaping program will be a better community for current residents and for future generations. For additional information about this project, contact Todd Rigler at 758-2311 or e-mail [mppdc@inna.net](mailto:mppdc@inna.net).

## **Middle Peninsula Disability Services Board Welcomes New Members**

The Middle Peninsula Disability Services Board (MPDSB) would like to welcome some new members and congratulate reappointments. The current board stands as follows: Franklin Y. Brizendine, Sr. (Chairman) and R. Gary Allen of Essex, Georgetown Hurley and Douglas Northstein of Gloucester, Sherrin Alsop and Rev. Keith Parham of King and Queen, Lucille Minor and Frank Pleva of King William, Betty Hudgins and Edward Smyth of Mathews, and Jack Miller and Skitch Colaw of Middlesex. Staff support will continue to be provided by Todd Rigler of MPPDC.

**King William Business  
Classes a Success**

The first Business Training Series for King William County was completed on February 5, 2002. There were 23 participants registered for the class and 18 completed the series. MPBDP has already worked with two small businesses that were created during the 4 week course. Jim Morris of Aylett has opened a part-time concrete contracting business called **Aylett Custom Concrete** and Vickie Slonneger, also of Aylett, has opened a part time craft business called **THE GOLDEN RULE**. Existing small business types represented were: a court reporting agency, a welding service, an auto repair service, a heating and air conditioning contractor, a Mary Kay consultant, and a mobile marine service. New ideas expected to become established in King William included a retail music store, a retail beauty supply and clothing store, a catering service, a trash collection service, and a consignment shop.

**Administrative Support  
Business Opens in  
Gloucester County**

Gail Lavigne has recently opened a small business operating out of her Gloucester County home. Called **BUSINESS RESOURCE CENTER**, the business provides publishing, secretarial and bookkeeping services to other small businesses. Gail has earned a Bachelor of Arts degree in Business Administration, and draws on over 15 years of administrative experience to assist her clients. She is also stay at home mother with 3 small children. MP-BDP with the assistance of Jim Thomas, Technical Assistance Provider, has been working with Gail to get her business off the ground. If you are interested in the services of the *Business Resource Center*, Gail can be reached by telephone at (804) 693-3449 or e-mail at [gavillavigne@earthlink.net](mailto:gavillavigne@earthlink.net).

**VMN Produces MICROPAGES**

Each year Virginia Microenterprise Network (VMN) produces an entrepreneur directory of new businesses that have been created or sustained with the assistance of the microenterprise programs throughout Virginia. This is the first issue that has included businesses within the Middle Peninsula region. The January 2002 directory is available and anyone wishing to have a copy may pick one up at the Planning District Commission office or call William at (804) 758-4917.

Are you a small business owner?  
Thinking about starting a business?

**BUSINESS TRAINING SERIES**

**Middlesex County**

**March 21, 2002 - April 16, 2002**

**6:30 PM - 9:00 PM**

Middle Peninsula Planning District Commission Board Room  
Saluda, Virginia

**Schedule of Classes**

Thursday, March 21, 2002	Business Law, Business Insurance And Personal Credit
Monday, March 25, 2002	Business Feasibility: Your Market and Your Competition
Thursday, March 28, 2002	Promoting, Marketing, And Advertising Your Business
Tuesday, April 2, 2002	Bookkeeping and Recordkeeping For Your Business
Thursday, April 4, 2002	Business Taxes
Tuesday, April 9, 2002	Financial Forecasting For Your Business
Thursday, April 11, 2002	Developing Your Business Plan: Putting It All Together
Tuesday, April 16, 2002	Training Summary: Overall Review Question & Answer Period

To register for classes, please call William Smith, Program Director at (804) 758-4917  
Space is Limited!

**\$20.00 Registration Fee**

Middle Peninsula Business Development Partnership  
P.O. Box 286  
Saluda, Virginia 23149  
(804) 758-4917 Fax (804) 758-3221  
E-mail: [mpbdp@inna.net](mailto:mpbdp@inna.net)

For information on all of the current MPBDP Projects, e-mail [MPBDP@inna.net](mailto:MPBDP@inna.net).

Mission: "to increase Middle Peninsula household income and reduce underemployment and unemployment by providing individuals – particularly minorities and youth – with access to the means to start or expand small businesses without having to leave the Middle Peninsula."

# EVENTS CALENDAR

## March 2002

Mon	Tue	Wed	Thu	Fri
				1
4	5	6	7 Master Gardeners 9:30 AM	8 MP/NN LGA 10:00 AM
11 Middle Peninsula Land Trust 7:00PM	12	13 Local Planners 9:30 AM	14 VDOT District Meeting 9AM	15
18	19	20 <i>Spring Begins</i>	21 Public Education Consortium 9:00 AM BDP Training Class-6:30PM	22
25 MPPDC Staff Meeting 9:00 AM BDP Training Class-6:30PM	26 Middlesex County Communications 7:00PM	27 MPPDC Dinner Meeting 6:00 PM	28 BDP Training Class-6:30PM	29 <i>Good Friday</i>

## April 2002

Mon	Tue	Wed	Thu	Fri
1	2 BDP Training Class-6:30PM	3	4 Master Gardeners 9:30 AM BDP Training Class-6:30PM	5
8	9 MP Land Trust 7:00 PM BDP Training Class-6:30PM	10 Local Planners 9:30AM	11 BDP Training Class-6:30PM	12 MP LGA Meeting 9:00AM
15	16 BDP Training Class-6:30PM	17 PSAP 10:30 AM MPBDP 7:00PM	18 Public Education Consortium 9:00 AM	19
22 MPPDC Staff Meeting 9:00 AM	23 Middlesex County Communications 7:00PM	24 <i>Employees' Day</i> MPPDC Monthly Meeting 7:00 PM	25	26
29	30			

## May 2002

Mon	Tue	Wed	Thu	Fri
		1	2 Master Gardeners 9:30 AM	3
6	7	8 Local Planners 9:30 AM Dragon Run Steering Committee 7:30 PM	9	10 MP LGA 9:00AM
13 MP Land Trust 7:00 PM	14	15 MPBDP 7:00PM	16 Public Education Consortium 9:00 AM	17
20 MPPDC Staff Meeting 9:00 AM	21	22 MPPDC Monthly Meeting 7:00 PM	23	24
27 <i>Memorial Day Observed-Office Closed</i>	28 Middlesex County Communications 7:00PM	29	30 <i>Memorial Day</i>	31

Unless otherwise noted, all meetings are held at the MPPDC offices in Saluda. The site of the Quarterly PDC Dinner Meeting is announced in a separate mailing. All times and dates are subject to change.

# MPPDC NEWS

## Commissioners

**Essex County**  
Mr. R. Gary Allen (Treasurer)  
Mr. Thomas M. Boyd, Jr.  
Hon. Margaret H. Davis  
Hon. Edwin E. Smith

**Town of Tappahannock**  
Hon. Edward L. Hammond

**Gloucester County**  
Hon. Ross M. Hines  
Dr. Maurice P. Lynch  
Hon. Louise Theberge

**King and Queen County**  
Hon. Sherrin C. Alsop  
Hon. H. Lee Busick  
Ms. Irene Longest

**King William County**  
Mr. Robert F. Brake  
Hon. Lloyd E. Byrum, Jr.  
Hon. Edward P. Sterowski

**Town of West Point**  
Hon. Andrew J. Conklin

**Mathews County**  
Hon. Charles E. Ingram  
(Vice Chairman)  
Hon. Kevin L. Mitchem  
Mr. Rodney S. Rhodes  
Mr. Stephen K. Whiteway

**Middlesex County**  
Hon. Fred S. Crittenden  
Mr. Charles M. Culley, Jr.  
Mr. Curtis L. Jones  
Hon. Kenneth W. Williams  
(Chairman)

**Town of Urbanna**  
Mr. Jim Sapione  
Hon. Robert W. Straw

**Secretary/Director**  
Mr. Dan Kavanagh



The Middle Peninsula Planning District Commission welcomes David Fuss as the Director of the Dragon Run Special Area Management Plan (SAMP). Mr. Fuss was previously employed by the North Carolina Division of Coastal Management, where he developed a wetlands restoration and management plan for an 18,650-acre coastal reserve. Raised in Williamsburg, David later earned a B.A. in Environmental Science from the University of Virginia and a M.S. in Marine Resource Management from Oregon State University. He has extensive experience in fisheries and wetlands science, including employment with the Virginia Institute of Marine Science, the National Marine Fisheries Service, and the Oregon Department of Land Conservation and Development.



Congratulations to Justina I. Lewis, daughter of MPPDC secretary Rose Lewis, who recently received the \$10,000 Phillip Morris USA/Virginia Foundation for Independent Colleges Scholarship. The scholarship is awarded to 20 students each year, and is renewable for three years. Justina is a first-year undergraduate student at Randolph-Macon Women's College in Lynchburg.



Look for the Summer Issue of Channel Markers in June 2002.

## Staff

Executive Director	Director of Planning	Administrative Assistant
Dan Kavanagh	Lewis Lawrence	Barbara Zimmerman
Regional Projects Planner	Regional Projects Planner	Business Development Partnership
Todd Rigler	Claire Jones	William Smith
GIS Specialist	SAMP Director	Secretary
Tom Brockenbrough	David Fuss	Rose Lewis



## Middle Peninsula Planning District Commission

Saluda Professional Center  
125 Bowden Street  
P O Box 286  
Saluda, Virginia 23149  
PH: (804)758-2311  
FAX: (804)758-3221

BULK RATE  
U.S. POSTAGE  
**PAID**  
SALUDA, VA  
23149  
PERMIT No 7

Created in 1972, pursuant to the Regional Cooperation Act, the Commission is a confederation of nine local governments established to plan for the orderly and efficient physical, social and economic development of Virginia's Middle Peninsula region. Activities and policies of the Commission are set by Commissioners, who are appointed by the local governing bodies. The Commission provides its member local governments with planning, coordination, technical assistance, policy analysis, and management services in a wide array of program areas including information management, water quality, community development, demographic and economic analysis, transportation, and housing services. Channel Markers is published quarterly by the MPPDC, PO Box 286, Saluda, Virginia 23149. The Executive Director is Dan Kavanagh, and the editor of Channel Markers is Claire Jones. Comments should be addressed to the Editor.